

AYCLIFFE FELL WALKING CLUB – WALK DETAILS

OUTING No. 369: Saturday 14th December 2019

Visit our website www.afwc1977@gmail.com for all club news including information on this & other planned events during the year

Visit our website www.darlington.co.uk for all club news including information on this & other planned events during the year.					
WALK AREA	Pateley Bridge to Hampsthwaite (Nidderdale Way)				
COACH FARES	MEMBERS £10	NEW MEMBERS £15 (inc Memb Fee)	JUNIORS: £5 (10 -17 years)	Approx. journey time from Darlington	1 hour(s)
TO RESERVE A COACH SEAT	To reserve a coach seat simply contact Sheila Pinkney by email: sheilapinkney@yahoo.co.uk or 07853 795243(Sheila's new number). Please note that when booking, those having attended the previous club outings will be given priority!				
CANCELLATION POLICY	<i>If you've had your place on the coach confirmed and then cancel after 9.00pm Tuesday week i.e. within 10 days of the trip, or fail to show on the day, you'll be asked to contribute £10 towards Club funds in lieu of the standard coach fare; payment is to be made on your next outing with the Club!</i>				
O.S.MAPS	LR 99 Ripon & LR 104 Leeds/ Bradford or Explorer 298 Nidderdale				
PICKUP DETAILS	Bishop Auckland – Cabin Gate 07.30 Newton Aycliffe – Big Club 07.50 Darlington – Feethams 08.05				
SUGGESTED WALK ROUTES	<ol style="list-style-type: none">16 miles - Pateley Bridge (Nidderdale Way North)– Blazefield, White Houses, Brimham Rocks, Brimham Moor, Brimham Lodge, Woodfield Ho, Shaw Mills, Kettle Spring, Scarah Moor, Cayton Gill Farm, Ripley (PH), Hollybank Wood, Hampsthwaite.11.5 miles - Pateley Bridge (Nidderdale Way South)– Bewerley, Guise Cliff, Heysham, Summerbridge, Darley, Birstwith, Hampsthwaite.10.5 miles - Pateley Bridge – River Nidd (North Bank), footbridge across to South Bank, Harewell, Summerbridge and then as Walk 2 to Hampsthwaite..13.5 miles - Pateley Bridge – as Walk 1 to Shaw Mills, then Burnt Yates (PH), Dinmore House, Birstwith and Hampsthwaite.14 miles/12 miles - Summerbridge – New York, Hazel Bank, Brimham Moor and then as Walk 1 or Walk 4.7.5 miles - Summerbridge – Dacre Banks and as Walk 2 to Hampsthwaite.				
NOTES	<ol style="list-style-type: none">The coach will travel via A1(M)/ A61/ B6265 to Pateley Br. and then B6165 to Summerbridge, B6451 to Wellington Inn then Main St, New Row & Elton Lane to Hampsthwaite.If you wish to undertake a walk not shown here, your coach will set you down at any safe and convenient point en-route.There is one pub Hampsthwaite- The Joiners ArmsHomeward departure will be prompt at 6.30pm.				
IN EMERGENCY	In the event of an emergency during the walk, dial 999 and phone Enterprise Coaches (07917 880212/ 07532 802596) and/or send a text to Stephen Snowdon (07306 049450) or Andy Jakob (07730 881216) , advising the grid reference of your location. If you have no signal, move to a different location and try again!				

Aycliffe Fell Walking Club (hereinafter the Club) shares the view of the British Mountaineering Council.

Those joining this outing or any other activity organised by the Club are reminded that “hill-walking, scrambling and mountaineering are activities with a danger of personal injury or death. Participants should be aware of and accept these risks & be responsible for their own actions and involvement”. The Club and it's officers accept no responsibility or liability for accidents howsoever incurred.

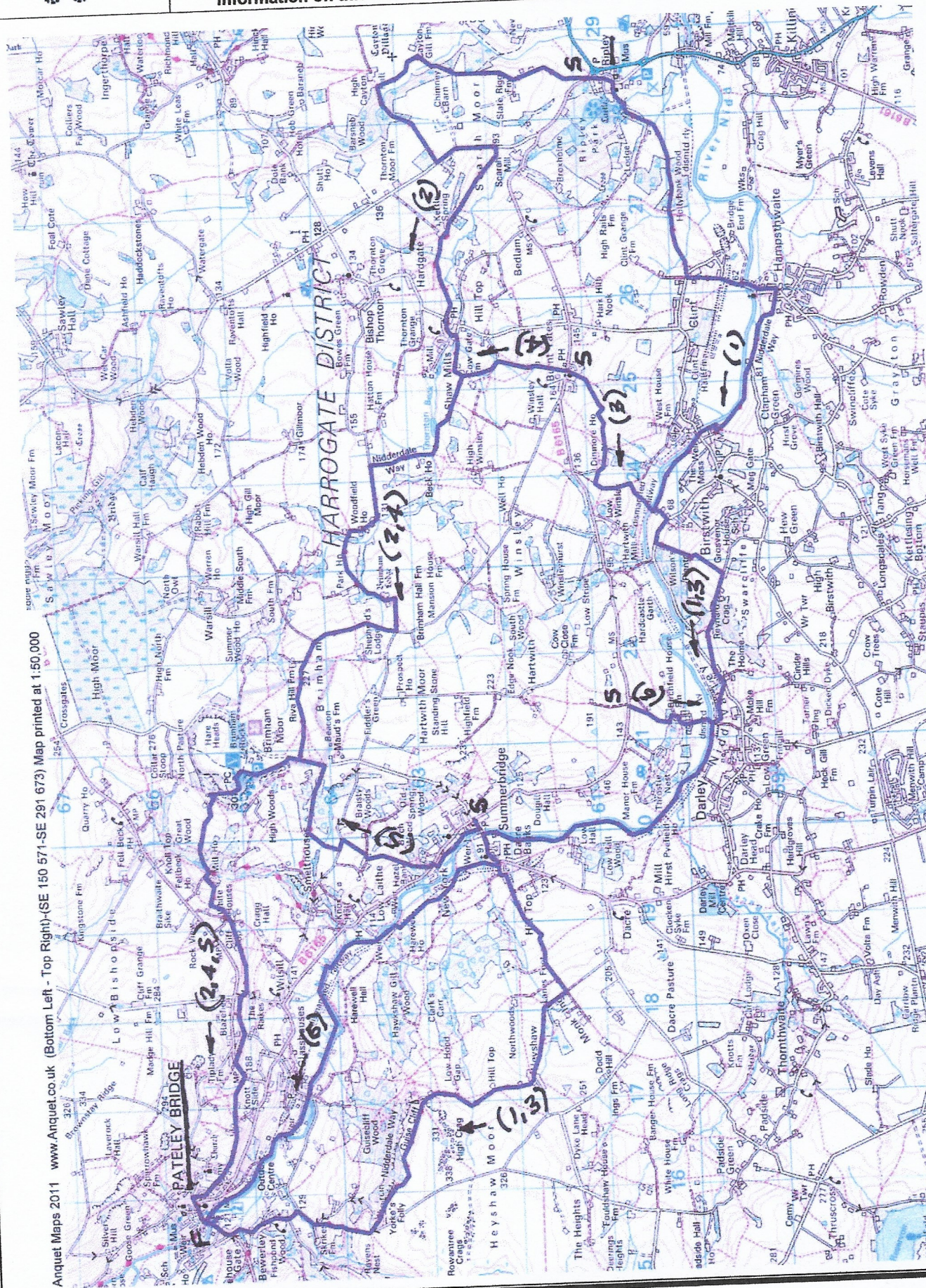
Reminder: The next walk is on Saturday 11th January. Derwent Valley(Castleside) to Hexham



AYCLIFFE FELL WALKING CLUB NEXT OUTING

Walk No.
300

Visit our website www.aycliffefellwalkingclub.co.uk for all club news including information on this and other planned walks during the year.



Anquet Maps 2011 www.Anquet.co.uk (Bottom Left - Top Right) (SE 150 571-SE 291 673) Map printed at 1:50,000

This product includes mapping data licensed from Ordnance Survey. © Crown copyright and/or database right 2011. Licence number PU 10003920